

GENERAL NOTES
 This drawing is copyright and owned by Capita Property and Infrastructure Ltd., and is for use on this site only unless contractually stated otherwise.

DO NOT SCALE this drawing (printed or electronic versions). Contractors must check all dimensions from site. This drawing has been printed to the correct scale if the following records with real measurements:

0mm 40mm 80mm

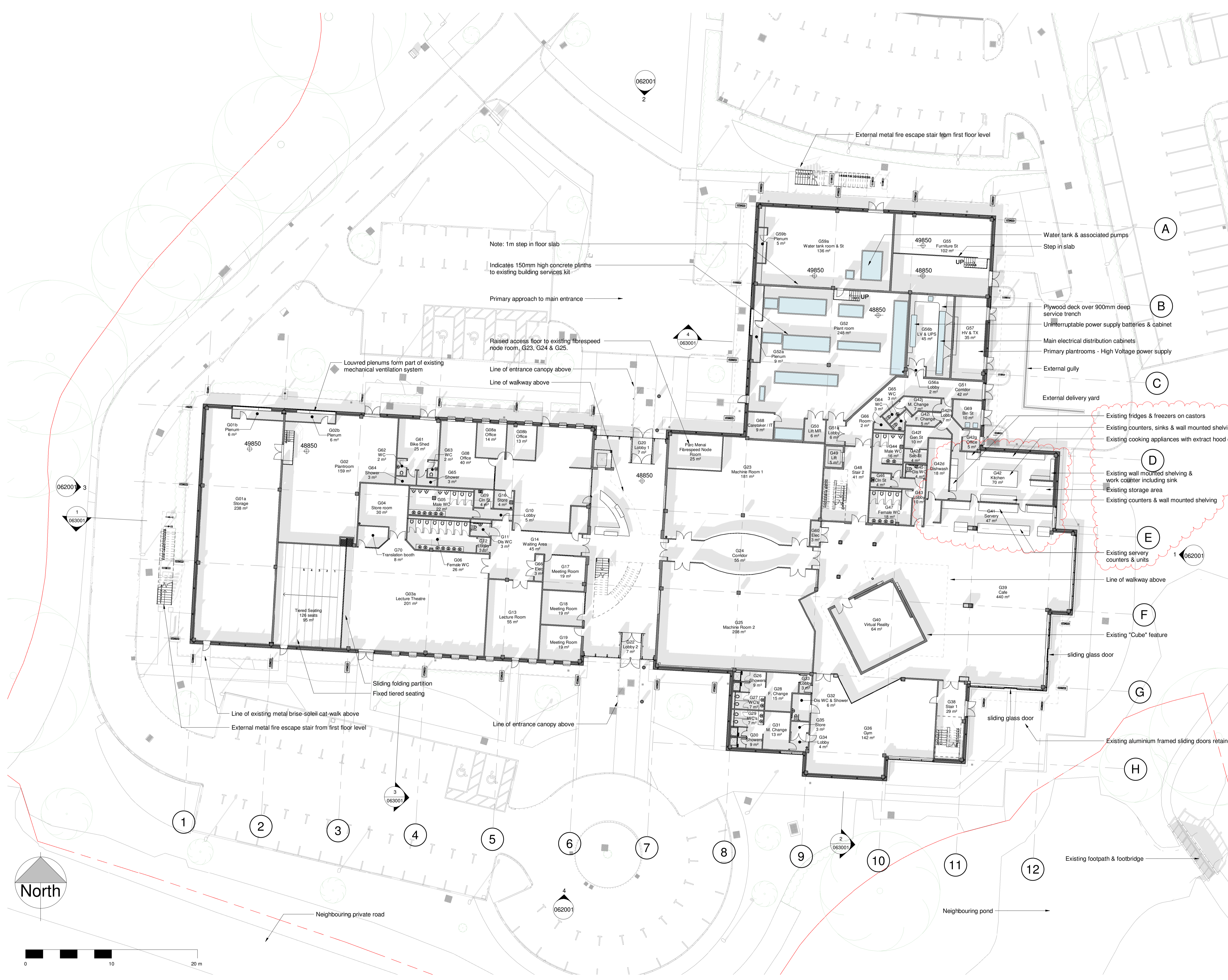
All other design team elements, where indicated, have been imported from the consultant's drawings and reference should be made to the individual consultant's drawings for exact setting out, size and type of component. Discrepancies and/or ambiguities within this drawing, between it and information given elsewhere, must be reported immediately to the architect for clarification before proceeding.

All works are to be carried out in accordance with the latest British Standards and Codes of Practice unless specifically directed otherwise in the specification. Responsibility for the reproduction of this drawing in paper form, or if issued in electronic format, lies with the recipient to check that all information has been replicated in full and is correct when compared to the original paper or electronic image. Graphical representations of equipment on this drawing have been co-ordinated, but are approximations only. Please refer to the Specifications and / or Details for actual sizes and / or specific contractor contribution information. This original document is issued for the purpose indicated below and contains information of confidential nature. Further copies and circulation will be strictly in accordance with the confidentiality agreement under the contract. This original must be destroyed or returned to the contractor.

SAFETY, HEALTH AND ENVIRONMENTAL INFORMATION

Refer to the relevant Construction (Design and Management) documentation where applicable.

It is assumed that all works on this drawing will be carried out by a competent contractor, working where appropriate to an approved method statement.



- P02 Service Industries catering department amends as follows: existing canteen kitchen equipment & stores layout amended to suit site photos received 14th May. Kitchen office added. Admin office swapped with small meeting room & connecting door added to PAM office. Public access corridor door moved to enable private access to visitor WC's from beauty rooms. Glazed screens into commercial beauty room & spa omitted. (TG/ARF/TG) 15/03/20
- P01 Existing building detail updated to suit additional record information supplied by building owner. 'Cube' detail added. Notes added as highlighted. Value engineering changes incorporated. (TG/ARF/TG) 15/03/20
- P00 First Issue (TG/ARF/TG) 21/10/19

Rev Description (Chk'd / App'd) Date
 Status
S2 - Fit for information
 Classification
Commercial in Confidence
 Client
GLLM



Project
GLLM Parc Menai

Drawing
Ty Menai - Existing Ground Floor Plan

Scale @ A1 Drawn Checked Approved
1 : 200 TG ARF TG

Project No. Date
CS/098555-02 19/10/19

Drawing Identifier
 project origin zone level file type role number revision
GPMCAP-Z2-00-DR-A-061001_revP02

CAPITA
 Architecture
 St David's House, Pascal Close, St Mellons, Cardiff, CF3 0LW - 02920 803500
www.capitaproperty.co.uk
 Capita Property and Infrastructure Ltd.

