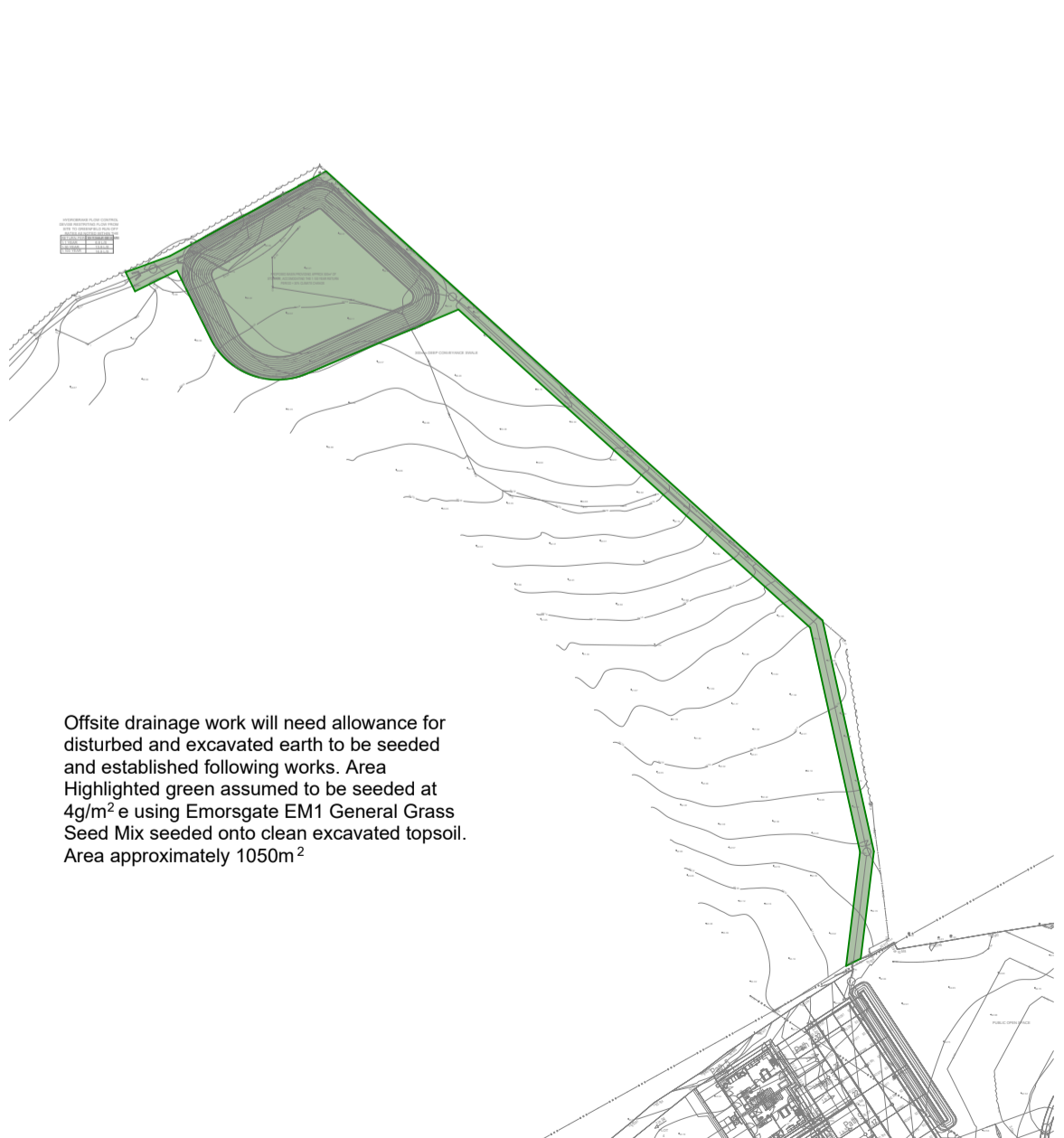


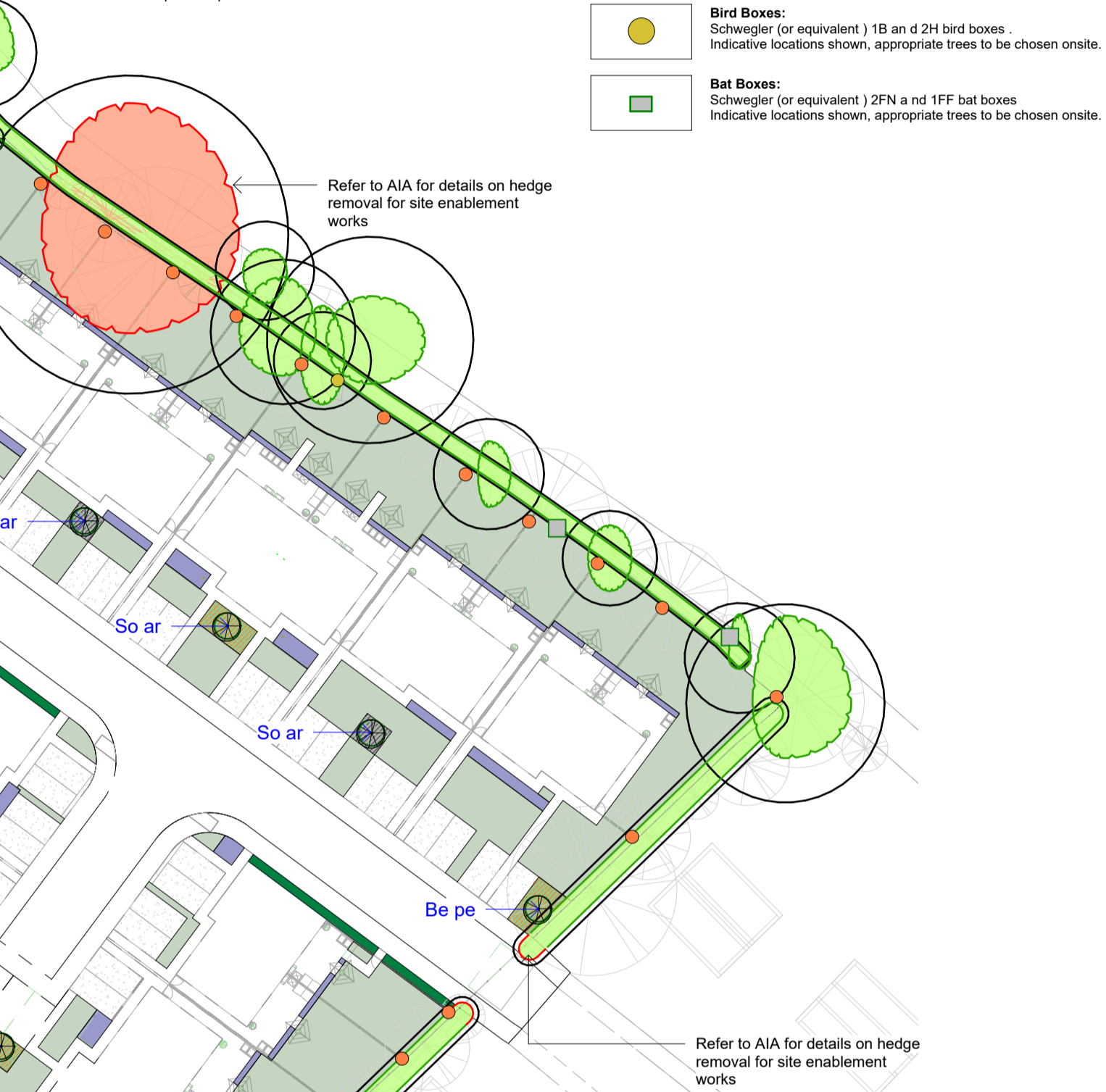


DETAIL PLANTING PLAN - 1:500

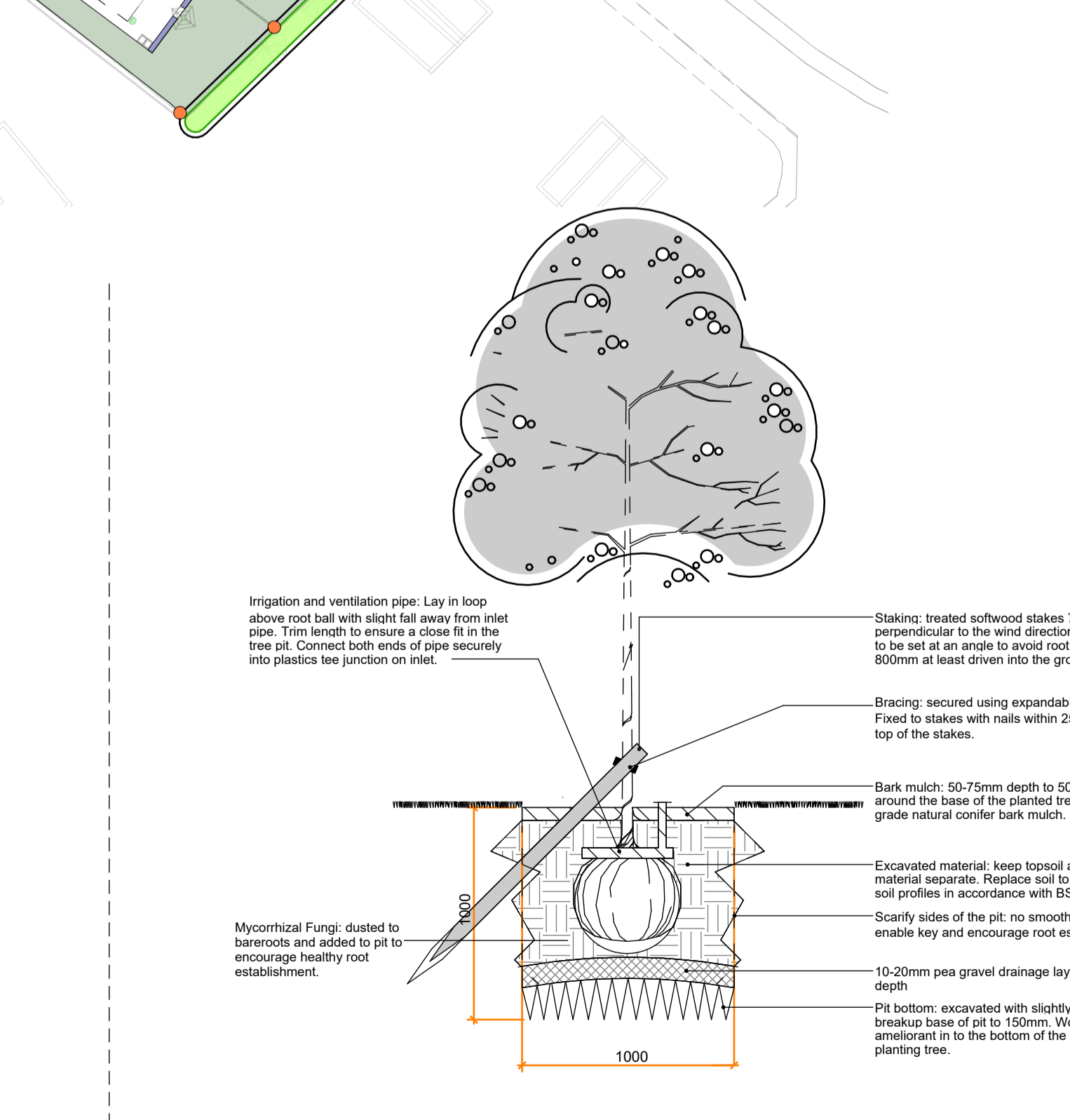


OFFSITE DRAINAGE CALLOUT - 1:1000

- LEGEND**
- Existing Trees & Vegetation:** Areas of existing scrub to be retained and protected throughout works as specified by project ecologist. Refer to Arb Report for more details.
 - New Tree Planting:** Refer to Planting Schedule for details and plan for locations. Tree planting and tree pit notes provided.
 - Spring Bulb Planting Mix:** Refer to Planting Schedule for details and plan for locations. With 150mm minimum depth of clean imported topsoil to BS 3882:2015.
 - Single Species Ornamental Hedge Planting:** Refer to Planting Schedule for details and plan for locations. With 300mm minimum depth of clean imported topsoil to BS 3882:2015. All hedge planting to have Mycorrhizal Fungi with Gel dusted to bareroots and added to pit to encourage healthy root establishment. All hedging to have biodegradable shrub shelter 750mm high x 150mm dia fitted to a 25x25x900mm timber stake or cane.
 - Derelict Clawd Replacement Hedge Planting:** Refer to Planting Schedule for details and plan for locations.
 - Hawthorn Replacement Hedge Planting:** Refer to Planting Schedule for details and plan for locations.
 - New Grass Seed (3,862m² Total Area):** Grass areas to use Emorsgate EG1 Grass Seed Mix or equal approved at 4g/m². With 150mm minimum depth of clean imported topsoil to BS 3882:2015.
 - Roadside Swale Seed Mix (120m² Total Area):** Swale areas to use Emorsgate EM3 Meadow Mixture for Wetlands Seed Mix or equal approved. With 150mm minimum depth of clean imported topsoil to BS 3882:2015.
 - Single Species Groundcover 1:** Refer to Planting Schedule for details and plan for locations. With 450mm minimum depth of clean imported topsoil to BS 3882:2015.
 - Single Species Groundcover 2:** Refer to Planting Schedule for details and plan for locations. With 450mm minimum depth of clean imported topsoil to BS 3882:2015.
 - Housing Rain Garden Mix:** Refer to Planting Schedule for details and plan for locations. With 450mm minimum depth of clean imported topsoil to BS 3882:2015.
 - Hibernacula:** Hibernacula features located within habitat area. Refer to detail for form and structure.
 - Hedgehog Holes:** Holes in timber created to allow the movement across site (approx. 130x130mm). Signs above the holes saying not to block them should be placed above the holes.
 - Native Woodland Planting Mix:** Grass areas Emorsgate EG1 Grass Seed Mix or equal approved. All tree planting to have Mycorrhizal Fungi with Gel dusted to bareroots and added to pit to encourage healthy root establishment. All whip to have biodegradable shrub shelter 750mm high x 150mm dia fitted to a 25x25x900mm timber stake.
 - Bird Boxes:** Schwegerl (or equivalent) 11B and 2H bird boxes. Indicative locations shown, appropriate trees to be chosen onsite.
 - Bat Boxes:** Schwegerl (or equivalent) 2FN and 1FF bat boxes. Indicative locations shown, appropriate trees to be chosen onsite.



TREE PIT DETAIL - 1:25



HIBERNACULA DETAIL - 1:25

DETAILED PLANTING NOTES

- BEFORE WORKS & DURING CONSTRUCTION**
- The Detailed Planting Notes should be read in conjunction with all landscape drawings.
 - Existing trees and boundary vegetation to be retained are protected by Tree Protection Fencing prior to any site works. All tree works to be carried out by qualified Tree Surgeon outside of bird nesting season and in line with Arboricultural Report.
 - The Landscape Contractor is responsible for checking for any below ground services in the vicinity of the planting works. Give notice of any that may be affected and obtain instructions before proceeding.
 - All planting beds to be bare ground, free of grass, weeds, removing all litter debris and stones.
 - All container grown plants to be well watered in their container prior to planting.
 - No planting should occur when the ground is frozen or water logged.
 - Plant materials to conform to National Plant Specification. All plants to originate within the UK. Planting operations to be in accordance with BS 428:1999.
- SOIL NOTES**
- All softworks areas to be free draining with subbase or ground beneath, all planting areas to be broken up to allow good establishment and key for new roots.
 - Grassed and/or lawn areas to have 150mm minimum depth of clean imported topsoil to BS 3882:2015.
 - Meadowseeded wildflower areas to have 150mm minimum depth of imported low fertility soil. Low fertility soil is to limit the nutrient level of the soil to enhance performance of wildflower meadow seeded areas. Soils to meet requirements of BS3882.
 - Ornamental hedge planting to have 300mm minimum depth of clean imported topsoil to BS 3882:2015.
 - Tree planting to be in accordance with detail provided: Pit bottom excavated existing soil to 150mm. Work soil ameliorant into the bottom of the pit before planting. 10-20mm pea gravel drainage layer above, 100mm depth. After planting, backfill the pit with replaced original soil profiles in accordance with BS 9545.
 - Ensure that if new soil and/or compost is used it is peat free.

- PLANTING NOTES**
- All new tree planting in soft landscaping to be in a 0.5m radius, weed free circle, refer to tree pit detail.
 - All new shrub planting is to be planted into a weed free bed a minimum 100mm wider than the planting area, plants to be set at least 150mm back from any fence, wall or edge.
 - All new planting pits to ensure sides are loosened avoiding smooth sides.
 - All planting mixes to be planted in natural drifts and groups as indicated on planting schedules.
 - All tree and hedge planting to have Mycorrhizal Fungi with Gel dusted to bareroots and added to pit to encourage healthy root establishment.
 - All whip and hedging to have biodegradable shrub shelter 750mm high x 150mm dia fitted to a 25x25x900mm timber stake or cane, as per manufacturers recommendations.
 - All new plants to be thoroughly watered in immediately before planting in containers and after planting.
 - All planting beds to be thoroughly mulched with organic Natural Bark to a lightly consolidated depth of 50mm, finishing 25mm below adjoining finished surface level.
 - No use of pesticides and herbicides (except for use on INNS).
- PLANTING MAINTENANCE NOTES:** In line with agreed maintenance schedule:
- Control weed growth by maintaining a weed free area around each plant during the first few years with organic mulch woodchip material, all areas topped up to maintain a 50mm depth for the maintenance period. Hand pulling of weeds may be necessary.
 - Prune dead and broken branches.
 - Litter picking of all planting beds.
 - The proposed planting has been specified to be contextually appropriate species that following the establishment period will thrive without irrigation and will continue to do so in those conditions likely as a result of climate change, i.e. typically warmer and wetter conditions.
 - During the first year after planting, it may be necessary to water all plants in prolonged periods of dry weather. This usually occurs during May - September. All planting areas should be watered to field saturation using clean fresh water on a weekly basis in these cases.

- REMOVAL OF STAKES AND TIES**
- Check stakes and ties. Adjust or replace as necessary during establishment.
 - All shrub guards, canes and tree stakes should be removed at the end of years 3 following planting.
- FORMATIVE PRUNING OF TREES & HEDGES**
- As young trees grow, remove lower branches gradually to raise the crown and retain a clear stem, remove any branches crossing boundary fences.
 - Remove multiple leaders on evergreens and other trees where a single leader is desirable.
 - New hedge planting to maintain an approximate height of 1m, with neat sides.
 - All hedges to be trimmed every year to ensure dense vegetation.
 - Hedge cutting to take place during November - February (outside bird nesting periods).

- SEEDING & WILDFLOWER AREAS**
- Management regular cutting in first year between 40mm & 60mm.
 - Verges to be kept tidy.
 - Seeding (wildflower areas) To be carried out to areas indicated in the autumn or spring following the first year of grassland establishment.
 - Prepare wildflower areas by raking to remove thatch and to disturb the surface of the soil.
 - Management (wildflower areas) Grass areas to be managed as hay meadow (cut in August and remove arisings).

DWG code	Latin Name	Height	Specification	No.	Mix %	Qty
TREE PLANTING - specify tree pit detail for staking and planting instructions						
Ac ca	Acer campestre	-	8-10cm standard, rootballed	as shown	n/a	4
Cr la	Crataegus bvegivata 'Paul's Scarlet'	-	8-10cm standard, rootballed	as shown	n/a	4
So ar	Sorbus aria	-	8-10cm standard, rootballed	as shown	n/a	4
Be pe	Betula pendula	-	8-10cm standard, rootballed	as shown	n/a	4
So au	Sorbus aucuparia	-	8-10cm standard, rootballed	as shown	n/a	3
Pr av	Prunus avium	-	8-10cm standard, rootballed	as shown	n/a	4
Total No.						23

DWG code	Latin Name	Height	Specification	Per l/m	Mix %	Qty
DERELICT CLAWDD REPLACEMENT HEDGE PLANTING MIX - planted in species groups of 3 - 5						
	Corylus avellana	60-80cm	1+1 transplant, bare-root	4	25	46
	Crataegus monogyna	60-80cm	1+1 transplant, bare-root	4	25	46
	Ilex aquifolium	-	2L pot grown	4	5	9
	Acer campestre	60-80cm	1+1 transplant, bare-root	4	5	9
	Sambucus nigra	60-80cm	1+1 transplant, bare-root	4	5	9
	Prunus spinosa	60-80cm	1+1 transplant, bare-root	4	25	46
	Rosa canina	60-80cm	1+1 transplant, bare-root	4	5	9
	Viburnum opulus	60-80cm	1+1 transplant, bare-root	4	5	9
Total line m						184

DWG code	Latin Name	Height	Specification	Per l/m	Mix %	Qty
HAWTHORN REPLACEMENT HEDGE PLANTING						
	Crataegus monogyna	60-80cm	1+1 transplant, bare-root	4	100	16
Total line m						16

DWG code	Latin Name	Height	Specification	Per l/m	Mix %	Qty
SINGLE SPECIES ORNAMENTAL HEDGE PLANTING						
	Fagus sylvatica	60-80cm	1+1 transplant, bare-root	4	100	244
Total line m						244

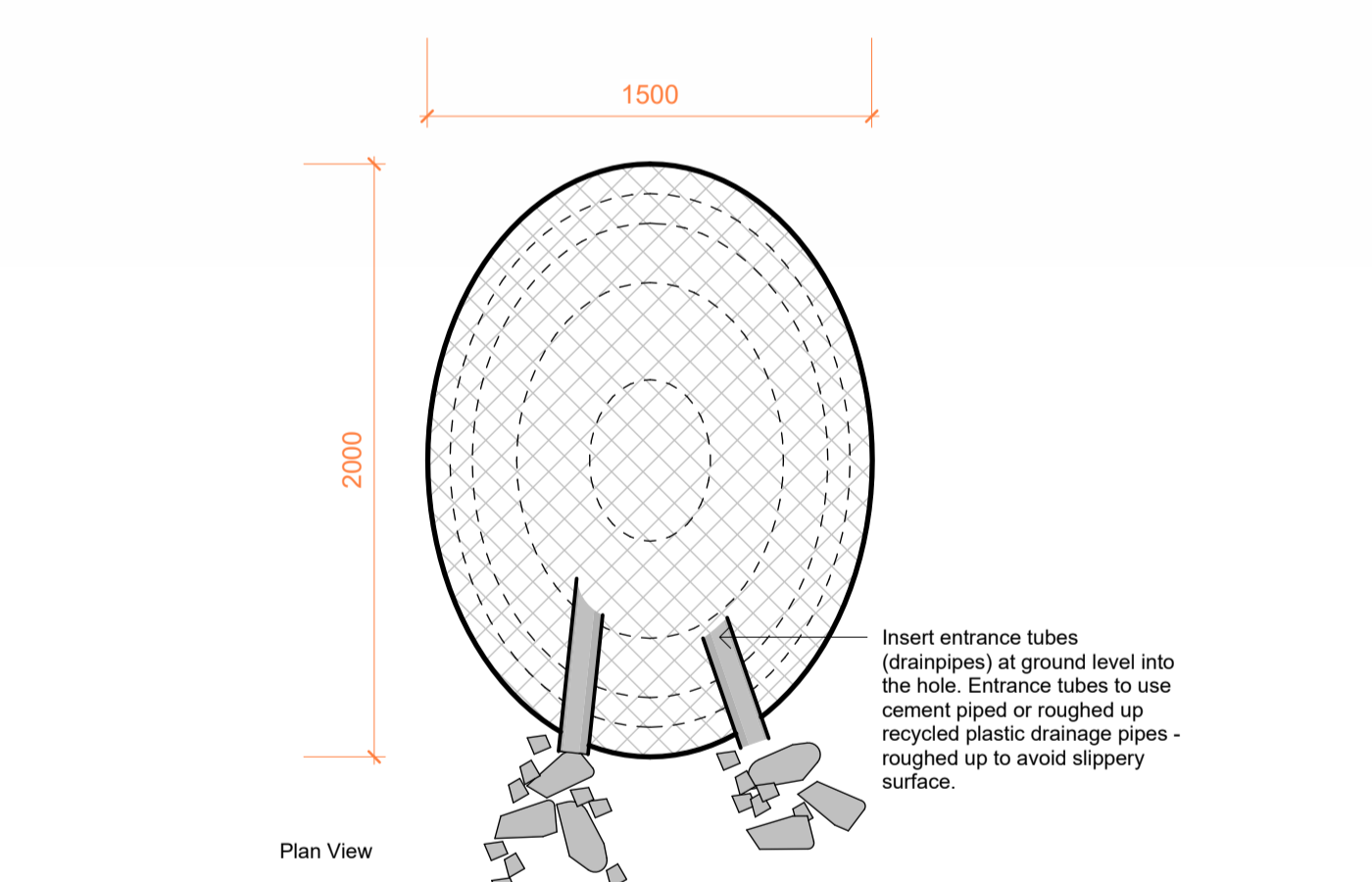
DWG code	Latin Name	Height	Specification	Per m ²	Mix %	Qty
HOUSING RAIN GARDEN PLANTING MIX - planted in species groups of 3 - 5						
	Iris Sibirica 'Siberian Flag'	3L pot		5	25	246
	Allium sphaerocephalon	2L pot		3	5	30
	Rudbeckia hirta	3L pot		5	15	148
	Hosta spp.	3L pot		2	15	59
	Helleborus foetidus	3L pot		2	15	59
	Carex muskingumensis	3L pot		4	25	197
Total m²						739

DWG code	Latin Name	Height	Specification	Per m ²	Mix %	Qty
SPRING BULB PLANTING MIX - planted in species groups of 15 - 30						
	Crocus vernus	3L pot		15	20	471
	Camassia leichlinii 'Alba'	2L pot		5	20	157
	Narcissus 'Lobularis'	3L pot		10	40	628
	Muscari 'Valerie Finnis'	3L pot		15	20	471
Total m²						1727

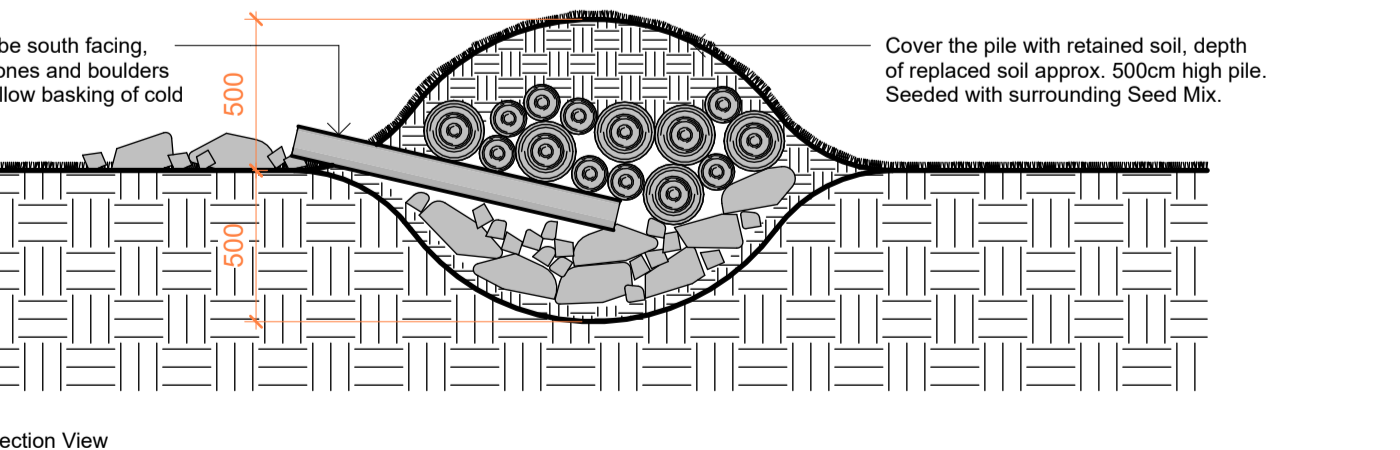
DWG code	Latin Name	Height	Specification	Per m ²	Mix %	Qty
NATIVE WOODLAND PLANTING MIX - planted in species groups of 3 - 5						
	Corylus avellana	60-80cm	1+1 transplant, bare-root	1	20	30
	Betula pendula	150-200cm	10L pot	0.5	20	15
	Crataegus monogyna	60-80cm	1+1 transplant, bare-root	1	25	38
	Euonymus europaeus	60-80cm	1+1 transplant, bare-root	0.5	10	8
	Quercus robur	60-80cm	1+1 transplant, bare-root	0.5	10	8
	Prunus spinosa	60-80cm	1+1 transplant, bare-root	1	10	15
	Viburnum opulus	60-80cm	1+1 transplant, bare-root	0.5	10	8
Total m²						122

DWG code	Latin Name	Height	Specification	Per m ²	Mix %	Qty
SINGLE SP. GROUNDCOVER 1						
	Hypericum calycinum	2L pot		5	100	360
Total m²						360

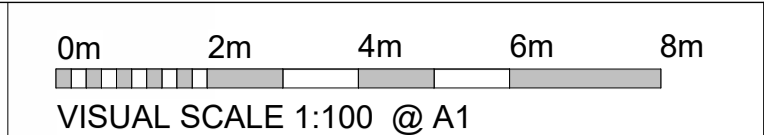
DWG code	Latin Name	Height	Specification	Per m ²	Mix %	Qty
SINGLE SP. GROUNDCOVER 2						
	Pachysandra terminalis	2L pot		4	100	88
Total m²						88



- To be located in a sunny spot, sheltered from extreme weather conditions such as exposed areas of site.
- Dig a hole about approx 50cm deep into free draining soil on site. Hole to be roughly 1.5 metres across and 2 metres in length.
- Hole to be filled with logs, branches, bricks and rocks (including appropriate site waste such as timber pallets, stone from demolished stone wall, and other clean site material) leaving plenty of gaps in between.



Section View



VISUAL SCALE 1:100 @ A1

Notes

- Do not scale off this drawing.
- Prior to any works, all dimensions to be checked and confirmed onsite.
- Any discrepancies are to be brought to the attention of the lead designer immediately.

Rev.	Revision description	Drawn	Checked	Date
P03	Access Gate added	RF	RF	22.11.23
P02	Issued for PAC	RF	RF	25.10.23
P01	Issued for comment	RF	RF	17.10.23

FENTON
LANDSCAPE ARCHITECTURE

Project
Gwel y Llan, Llandegfan
for DU Construction

Title
Detailed Planting Plan

Project Status
S2 - Suitable for Information

Drawing Number
GYL - FLA - XX - XX - D - L - 1002

Rev.
P03